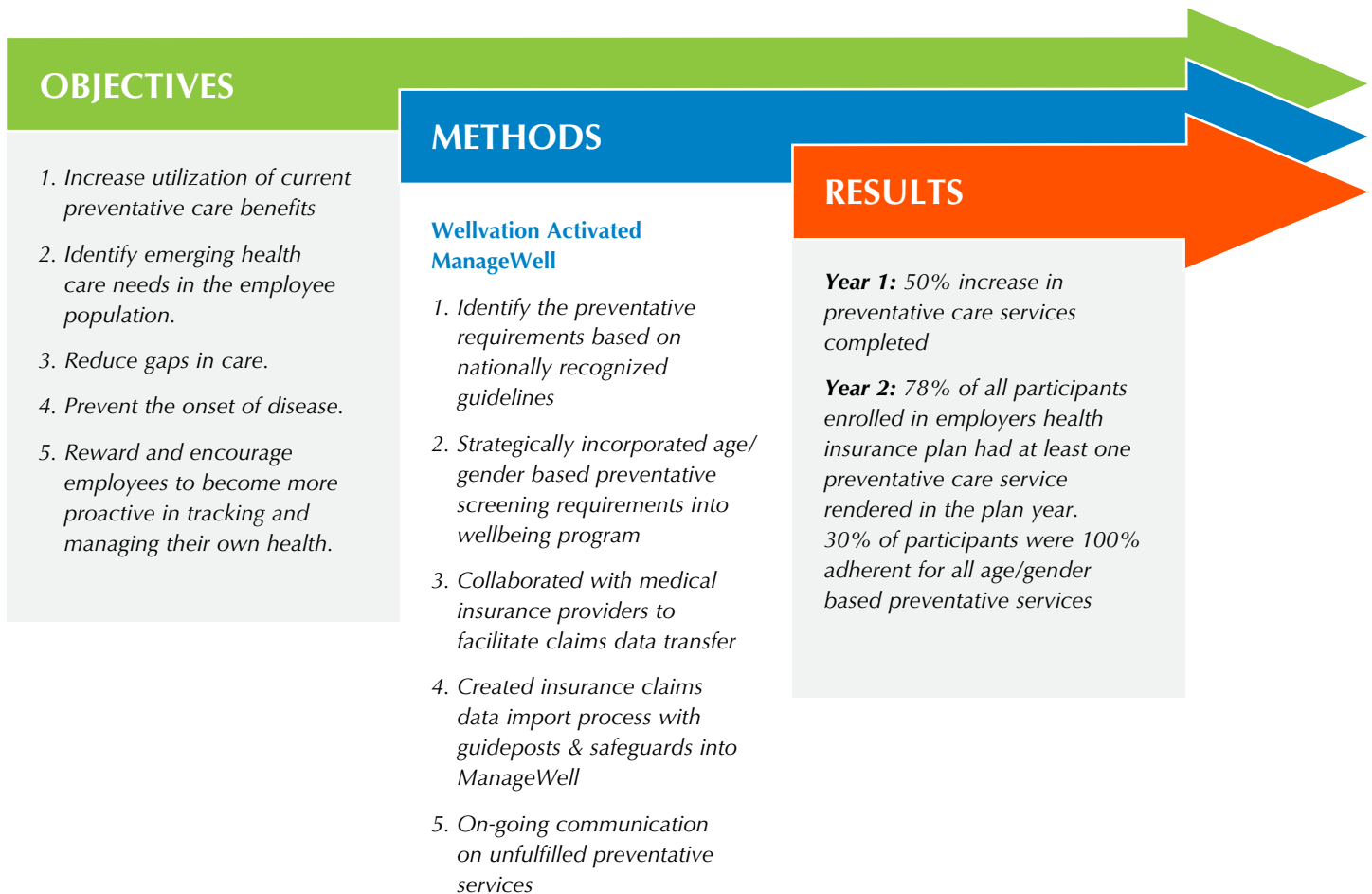


# Insurance Claims Data Integration Drive Preventative Care

A Wellvation client, a large regional healthcare system had historically had low employee utilization of preventative care services in their employers sponsored health benefits.

Their healthcare provider, and previous wellness provider, lacked the administrative and technical capability to identify, track, and import claims data from a variety of sources to motivate and reward employees and spouses for obtaining their age and gender specific care.



\* As of 2015, only 8 percent of US adults ages thirty-five and older had received all of the high-priority, appropriate clinical preventative services recommended for them. Nearly 5 percent of adults did not receive any such services. <https://www.healthaffairs.org/journal/hlthaff>